

Two-In-One-der Baby Cardigan

By Kathleen M. Eldredge



Out the door charges your little one and suddenly you see the label on the back of a shirt or jacket – wrong side out, again.

This cardigan solves the whole problem; it is totally reversible. Additionally, it looks like two different sweaters, one side has two cables, and the other side has one cable.

This sweater has no seams. The front band is knitted at the same time as the sweater, with a yarn over border, sleeves are knitted using circular method, like socks.

Sizes

6 month, 12 month, 18 month, 24 month

Finished Measurements

Chest: 19 (20, 21, 22) ins. to fit chest size: 17(18, 19, 20)

Sleeve Length to Underarm: 6-1/2 (7-1/2, 8, 8-1/2) ins.

Back Length: 14 (15, 16, 17) inches

Materials

[Sirdar Snuggly DK](#) (55% Nylon / 45% Acrylic 193 yds. / 50 g): 3 (4, 4) skeins

4 pieces of scrap yarn

Yarn needle, Sewing needle & matching thread for snaps

Stitch markers (at least 4 for seams, plus 10 in 2nd color)

Needles

One 16-24" circular needle, size US 1 (2.5mm)

One 24" circular needle, size US 3 (3.0mm)

Cable needle

Optional for sleeves:

4 double pointed needles, size US 1

4 double pointed needles, size US 3

Or:

2 16" circular needle, size US 1 (2.5mm)

2 16" circular needle, size US 1 (2.5mm)

Notions

6 Snaps 3/8-1/2 in.

Gauge

26-1/2 stitches and 34 rows = 4" (10cm) in Broken Rib stitch

Abbreviations

C4B: Slip 2 stitches to cable needle and hold behind, knit 2 stitches, knit 2 stitches from cable needle

C4F: Slip 2 stitches to cable needle and hold in front, knit 2 stitches, knit 2 stitches from cable needle

k1-tbl: Knit stitch through the back loop

k2tog: Knit 2 stitches together

M1: Increase by lifting the running stitch with right needle, twist and place on left needle, knit st.

pm: Place marker

pssso: Pass slipped stitch over stitch to the left

rt: Right Twist

sm: Slip marker

yo: Yarnover

Stitch Patterns:

Right Twist (rt): (2 sts.)

Right side row: p2

Wrong side row: Skip 1st stitch on left needle, knit into 2nd stitch, leave on left needle, knit into skipped stitch slip both sts. from left needle together, tug slightly

Broken Rib: (2 sts.)

Wrong side row on body: (p1, k1), repeat

Rnd 1 on sleeve: (k1, p1), repeat

Right side row (rnd 2 on sleeve): knit across section

Seed Stitch: (2 sts. @ seam)

Right side row: p1 before seam marker, sm, k1

Wrong side row: k1 before seam marker, sm, p1

Reversible Cable Set: (16 stitches)

Row 1 (right side): p2, k4, p4, k4, p2

Row 2 (wrong side): rt, p4, k4, p4, rt

Row 3 (right side): p2, C4F, p4, C4B, p2

Row 4 (wrong side): rt, p4, k4, p4, rt

Row 5 (right side): p2, k4, p4, k4, p2

Row 6 (wrong side): rt, p4, C4B, p4, rt

Notes:

Slip 1st stitch on each row knitwise

Tension is important. Make a swatch at least 4" x 4" over the broken rib pattern

Seams are defined by working a 2 stitch seed pattern (1 on each side of the marker)



I recommend starting new skeins by separating the plies and twisting a strand from each skein with one from the second skein until all 4 plies have been twisted, then twisting all together. This method leaves no woven ends to show on the reverse side of the sweater.

I used "circular knitting on straight needles" (explanation available upon request) method for working the sleeves. You can use 4 double pointed needles as you would for working socks or you can use 2 circular needles and divide the work in half. Be careful not to have gaps between needles using any of these methods.

If you decide to work the sweater in pieces (front, back, front), it will not be reversible and you need to add 1 stitch to the seam edge of each piece.

If you work the sleeves first, you can set them aside, ready to attach at the yoke of the main sweater.

Instructions

Sleeve (make 2):

Using long tail method and US 1 (2.25-2.50mm) needles, cast on 46 (48, 50, 52) sts. Distribute evenly over needles; place marker (pm) for beg of round (rnd), and join (be careful not to twist sts).

Work 1-1/4 (1-1/2, 1-3/4, 2) ins. In broken rib pattern, starting with row 1 and ending with row 2. NOTE: seam sts in row 2 may be worked in seed stitch pattern, if you desire a defined sleeve seam.

Change to US3 (3.25mm). Work 4 rnds in broken rib

Inc. rnd: k1, M1, continue in pattern to 1 st before end of rnd. M1, p1

Continuing in pattern, inc. 1 st. at each end of 20th (16th, 12th, 8th) until 52 (56, 60, 66) sts are on needle.

Continue without further inc. until sleeve measures 6-1/2 (7-1/2, 8, 8-1/2) ins finishing on a rnd 2.

Work rnd 1 to 4 sts. after underarm marker, slip last 8 sts from right needle (4 before marker and 4 after marker) onto spare yarn. Cut yarn leaving at least a 20 in. tail. Set aside.

Work 2nd sleeve exactly the same.

Body:

Using long tail method and US 1 (2.25-2.50mm) needles, cast on 42 (46, 50, 54) sts. for right front, pm for side seam, continue casting on 70 (78, 84, 92) sts for back, pm, continue casting on 42 (46, 50, 54) sts. for left front.

Lower Band:

Row 1 (wrong side): Slip 1st st knitwise, (k1, p1) 4 times, k1, sm, work wrong side row of Broken Rib Stitch pattern to 1 st. before side seam marker, k1, sm, p1, , work wrong side row of Broken Rib Stitch pattern across back to 1 st. before side seam marker, k1, sm, p1, , work wrong side row of Broken Rib Stitch pattern to front band marker, sm, (p1, k1) 5 times.

Row 2 (Right side): Slip 1st st knitwise, (p1, k1-tbl) 3 times, p1, k2tog, yo, sm, knit 31 (35, 39, 43) stitches, to 1 st. before side seam marker, p1, sm, k1, knit across back to 1 st. before side seam marker, p1, sm, k1, knit to front band marker, sm, yo, k2tog, (p1, k1-tbl) 3 times, p1, k1

Repeat these 2 rows for 1-1/4 (1-1/2, 1-3/4, 2) ins., ending on row 1.

Change to .325 mm, US3 needles

Row 1 (Right side): Slip 1st st knitwise, (p1, k1-tbl) 3 times, p1, k2tog, yo, sm for end of front band, knit st. for 8 (10, 12, 14)sts., pm, work reversible cable pattern for 16 sts., pm, knit 7 (9, 11, 13) sts, p1, sm for side seam.



knit 10 (12, 14, 16) sts., pm, work reversible cable pattern over 16 sts., pm, knit 18 (22, 24, 28) sts, pm, work reversible cable pattern over 16 sts., pm, knit 9 (11, 13, 15) sts., p1, pm for side seam.

Knit 8 (10, 12, 14) sts., pm, work reversible cable pattern over 16 sts., pm, knit 8 (, 10, 12, 14) sts., sm for front band. yo, k2tog, (p1, k1-tbl) 3 times, p1, k1.

Row2 (wrong side):

Slip 1st st knitwise, (k1, p1) 4 times, k1, sm, work broken rib pattern for 8 (, 10, 12, 14) sts., starting with a purl, sm, work reversible cable pattern over 16 sts., sm, work broken rib pattern for 8 (, 10, 12, 14) sts., starting with a purl, sm for side seam

work broken rib pattern for 10 (12, 14, 16) sts., starting with a purl, sm, work reversible cable pattern over 16 sts., sm, work broken rib pattern for 18 (22, 24, 28) sts., starting with a purl, sm, , work reversible cable pattern over 16 sts., sm, work broken rib pattern for 10 (12, 14, 16) sts., starting with a purl, sm for side seam.

work broken rib pattern for 8 (, 10, 12, 14) sts., starting with a purl, sm, work reversible cable pattern over 16 sts., sm, work broken rib pattern for 8 (, 10, 12, 14) sts., starting with a purl, sm, (k1, p1) 5 times.

Row 3 (Right side): Same as row 1, working row 3 of reversible cable pattern

Row4 (wrong side): Same as row 2

Row 5 (Right side): Same as row 1

Row6 (wrong side): Same as row 2, working row 6 of reversible cable pattern

Repeat these 6 rows until body measures 7-1/2 (8, 8-1/2, 9) ins., ending on a wrong side row.

Connect Sleeves:

Work across right front to 4 sts. before side seam marker, **slip 8 stitches (4 before side marker, 4 after side marker) onto right needle knitwise,

slip 8 loose stitches from sleeve onto cable needle, place right sides together, along 8 stitches just moved on body, pm, using sleeve tail yarn, work 3 needle cast off across 8 stitches from body & sleeve, slip last stitch over next stitch on back, slip this stitch back to left needle.**

Pick up tail from right front and knit around sleeve, pm, work right side row across back to 4 sts. before side seam marker, repeat from ** to **, pick up tail from back and knit around sleeve, pm, work right side row across left front.

Work next 3 rows of pattern as follows:

Next wrong side row across left front, sm, wrong side row for broken rib stitch across sleeve, starting with p1 for seam, sm, continue pattern across back, sm, wrong side row for broken rib stitch across sleeve, starting with p1 for seam, sm, continue pattern across right front.

Continue Rows 1-6 as above, working wrong side row of broken rib stitch across sleeves (rows 2,4,6) and knitting across sleeves (rows 1,3,5). Maintain 2 seam stitches at front to sleeve marker and sleeve to back marker.

At the same time, decrease 1 stitch before and after each seam on the this row as follows:

On right side, work across right front to 3 sts. before sleeve marker, k2tog k1, sm, p1, sl1 knitwise, k1, pss0, continue across sleeve to 3 sts. before back marker, k2tog k1, sm, p1, sl1 knitwise, k1, pss0, continue across back to 3 sts. before sleeve marker, k2tog k1, sm, p1, sl1 knitwise, k1, pss0, continue across sleeve to 3 sts. before left front marker, k2tog k1, sm, p1, sl1 knitwise, k1, pss0, continue across left front.

Continuing in pattern, repeat decreases every 4 rows on right side until 22 (25, 30, 34) sts are left on each front excluding band, 32 (36, 38, 44) sts are left on each sleeve, 50 (56, 62, 70) sts. are left on back. NOTE: the number of decreases Are 10 (11, 10, 10) for both fronts, 10 (10, 11, 11) for sleeves, and 10 (11, 11, 11) for back.



Continue pattern making decreases every right side row until 16 (20, 21, 23) sts remain on each front excluding band
Next row (wrong side) work across band and 4 (5, 5, 6) sts. of front, place these sts. on spare yarn, continue across row to end

Next row (right side) work across band and 4 (5, 5, 6) sts. of front, place these sts. on spare yarn, continue across row including decreases before and after each sleeve seam.

Continue armhole decreases every right side row, at the same time decrease 1 stitch at front neck on every row (k2tog 1 stitch before front edge) until there are 6 sts remaining on each front.

Continue armhole decreases every right side row, keeping neck edge straight until 2 sts remain on each front, 8 (8, 10, 10) sts are left on each sleeve, 26 (32, 34, 36) sts. are left on back

on next row, k2tog for front

NOTE: the number of alternate row decreases at armhole edge are 6 (, 5, 9, 11) for both fronts before placing neck stitches on spare yarn, 12 (, 14, 14, 17) for sleeves, and 12 (12, 14, 17) for back.

Neck band:

Using 2.25-2.5mm US1 needles, pick up 10 sts. from right front band, pick up 12 (16, 16, 18) sts. up side of neck, 8 (8, 10, 10) sts from right sleeve, 26 (32, 34, 36) sts. across back, 8 (8, 10, 10) sts from left sleeve, 13 (17, 17, 19) sts. up side of left neck, 10 sts. from left front band 87 (, 101, 107, 113) sts in all.

Work rib for $\frac{3}{4}$ " as follows

Right side rows: slip 1st st. knitwise, (p1, k1-tbl) repeat to 2 sts. before end of row, p1, k

Wrong side rows: slip 1st st. knitwise, (k1, p1) repeat to end of row

Cast off loosely in rib

Finishing:

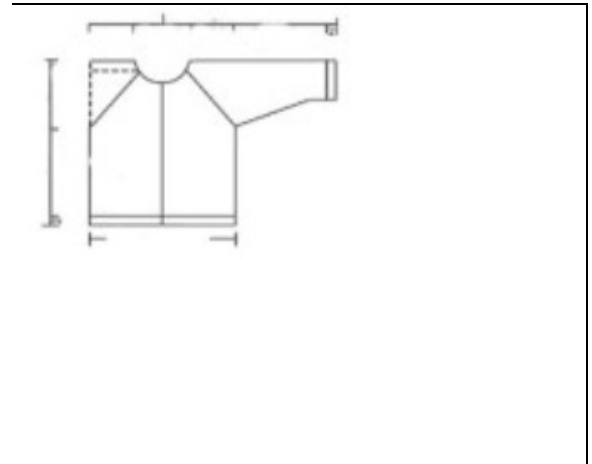
On wrong side, use yarn tail at underarm to weave in loose stitches at underarm bind off, work neatly so weaving is not visible, knot off under bind off section.

Sew on snaps: center each snap on the front band, 1st snap $\frac{1}{2}$ " below top of neckband, 5 snaps spaced evenly, the last one $\frac{3}{4}$ " from bottom.

Block as one piece, overlapping front bands – use either wet or spray method, do not iron acrylics to block, it will flatten the pattern.



Chest	19	20	22	24
Back Length	14	15	16	17
Sleeve to Underarm	6-1/2	7-1/2	8	8-1/2
Sleeve width	7-3/4	8-1/4	9	10
Body to Underarm	7-1/2	8	8-1/2	9
Sleeve Cuff	1-1/4	1-1/2	1-3/4	2
Bottom Cuff	1-1/4	1-1/2	1-3/4	2



This pattern was submitted to the Yarnmarket.com and TKGA Knitting Design Contest and was developed by a third party. While we have done our best to ensure its accuracy, we cannot guarantee that it will be completely error free. If you discover an error, please let us know and we will forward your email to the original knitter for correction or advice.

©Yarnmarket, LLC, All Rights Reserved.

